

**Al Ain English Speaking School – High School Profile****School**

Al Ain English Speaking School (AAESS) is located in the United Arab Emirates. AAESS is a British Curriculum School which follows the UK National Curriculum for England. This begins with Early Years and Foundation Stage, through to Key Stages 1, 2 and 3. Students in the equivalent of High School years follow a two year GCSE (General Certificate of Secondary Education) course where they study 9 subjects. Our pre-University programme consists of a minimum of 4 AS (Advanced Subsidiary Level) exams in the first year followed by 3 Advanced Level exams in the ultimate year of school. The final two years lead to a British GCE Award (General Certificate of Education).

Our students come from a wide range of backgrounds, cultures and educational systems. We are proud of the dynamic and friendly international student body which currently includes over 57 nationalities. We are academically inclusive upon entry and cater for students with a wide range of academic talent and ability. (However our provision for students with special needs is limited). Class sizes are generally lower than 25 and our Learning Support Assistants make a valued contribution to the life of the school working in close partnership with the Class Teachers.

Our school is licensed by the Department for Education in the UK (DfES 7036082) and registered with the ADEC (Abu Dhabi Educational Council) on behalf of the UAE Ministry of Education. We offer examinations from Edexcel and Cambridge International Examination boards.

Al Ain English Speaking School is a member of the BSME association (British Schools in the Middle East).

**Curriculum**

All subjects are taught through English over the course of three terms per academic year. The total teaching days per academic year is 183, each day having 7 fifty minute teaching periods. This teaching time is divided up appropriately between subjects being studied as per UK guidelines.

An outline of the curriculum and syllabi for subjects taught as per UK Examination board guidelines can be found on our website [www.aaess.com](http://www.aaess.com) and on the websites for the examination boards;

Edexcel UK Examination Board – [www.edexcel.org.uk](http://www.edexcel.org.uk)

Cambridge International Examination Board – [www.cie.org.uk](http://www.cie.org.uk)

### Grading and Ranking

GCSE Grades	A-LEVEL Grades (GCE)
A*	A*
A	A
B	B
C	C
D	D
E	E
F	U(ungraded)
G	
U(Ungraded)	

Note:

GCSE - General Certificate of Secondary Education

GCE - General Certificate of Education

Students are not ranked at AAESS and are taught in mixed ability classes.

### GPA Calculation

Grades awarded for each academic year are based on summative assessments together with a synoptic assessment determined by the end of year examinations. Grades for Year 11-Year 13 are based on external examinations completed through UK examination bodies previously mentioned, Edexcel UK and Cambridge International Examinations.

GPA calculation is unweighted and out of 4.0

### Standardised Test Results

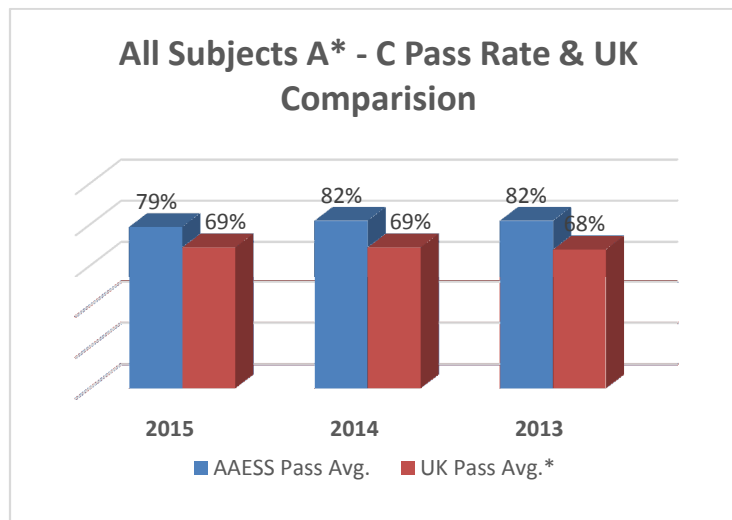
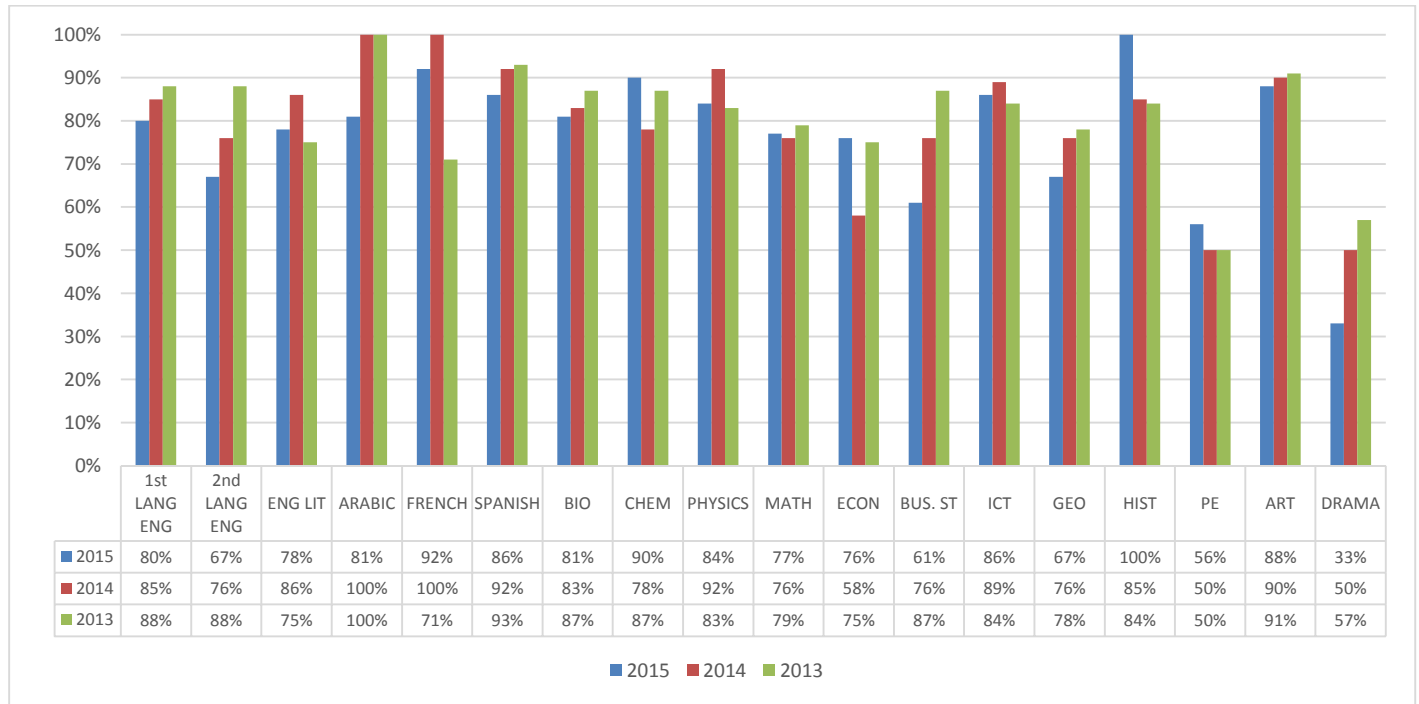
Al Ain English Speaking School has a comprehensive intake which means it is non-selective on entrance testing. Majority of students sitting examinations are non-native first language English speakers (approximately 60% are second language speakers) with a further 10% from IGCSE are local students.

In 2015, 20 (11 Male and 9 Female) in Year 13 sat the final A level examinations (with a few repeating or entering themselves for AS exam also (repeaters). In Year 12, 45 candidates sat the AS examinations, 31 Male and 14 Female. In Year 11, 72 candidates sat IGCSE (CIE) and GCSE (Edexcel).



'Achieving Excellence'

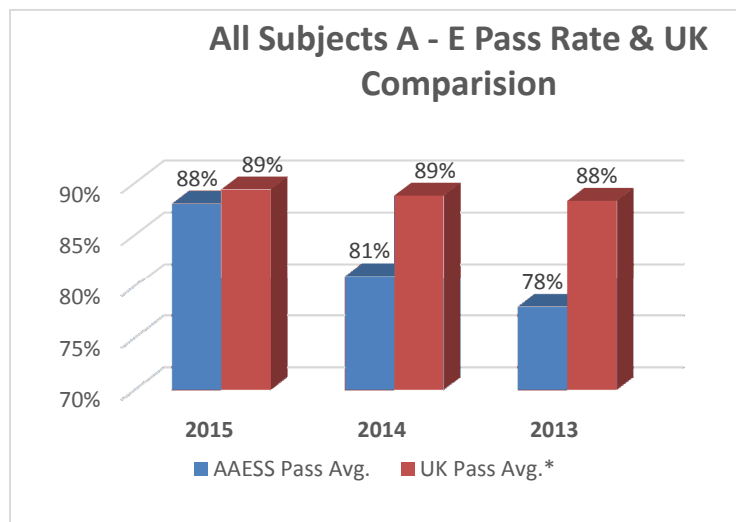
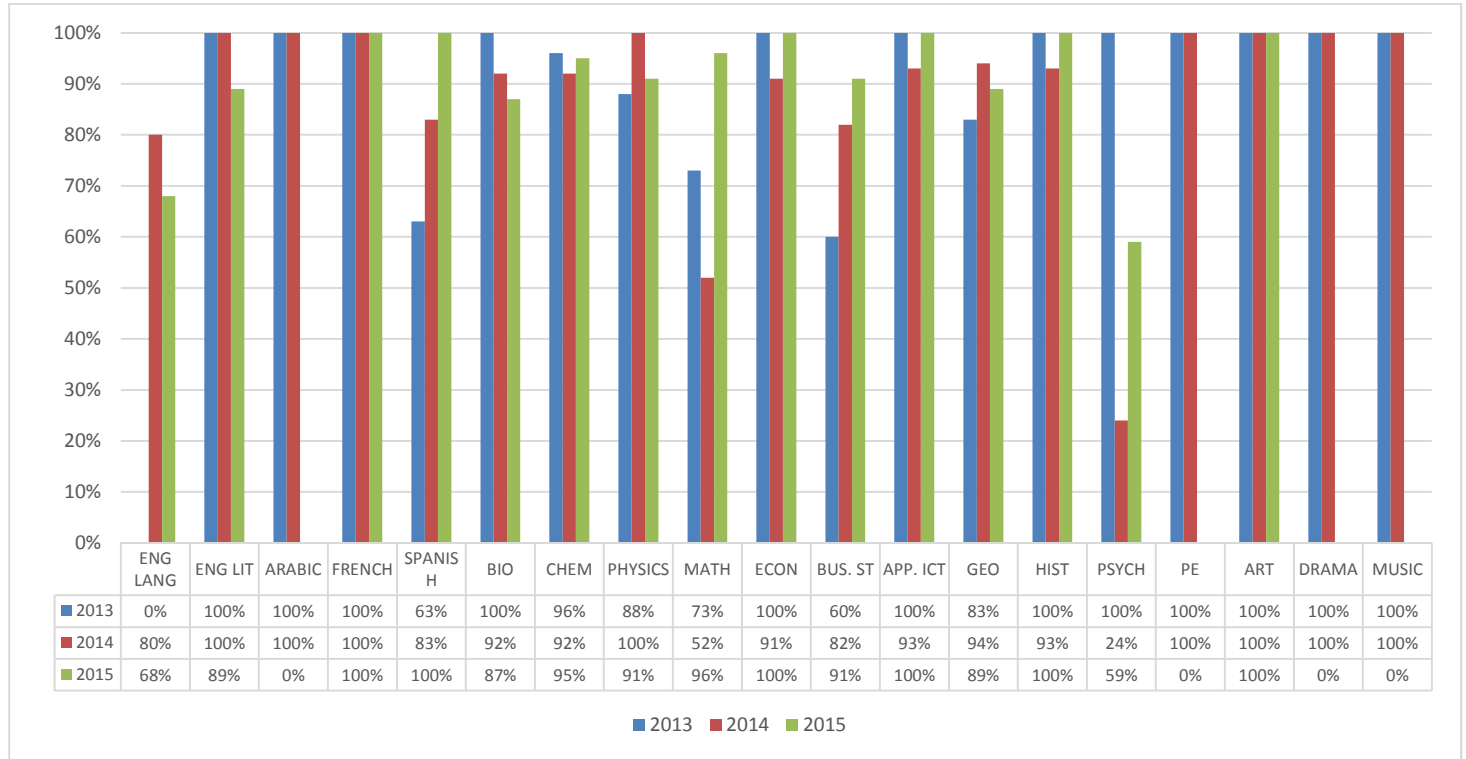
Standardised Test Results Year 11 – GCSE June 2015





'Achieving Excellence'

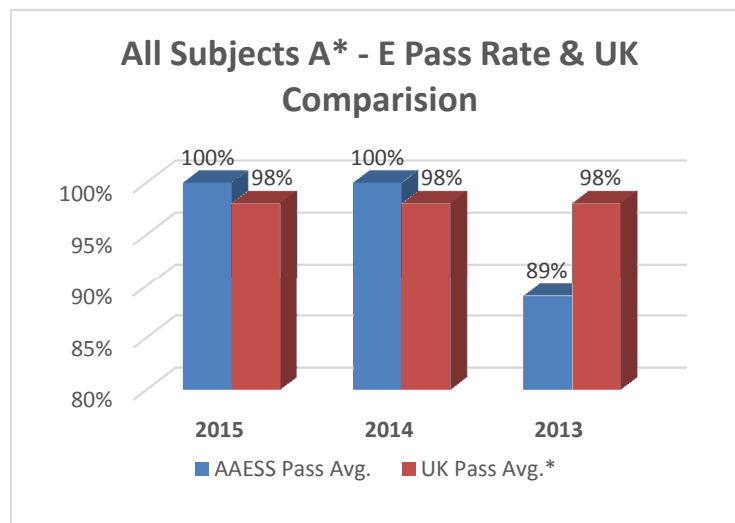
Standardised Test Results Year 12 – Advanced Subsidiary Level June 2015





'Achieving Excellence'

Standardised Test Results Year 13 – Advanced Level June 2015



### Alumni

At the end of each academic year approximately 80-90% of our students who graduate progress to university or further tertiary education. As we are an international school the intake of different nationalities varies from year to year, therefore it would be correct to say that a significant amount of our students apply and are accepted to US universities, both as home and international students. The exact percentage will change from year to year. Listed below are some of the many universities which our alumni have attended or are currently attending worldwide:

Dartmouth College, USA	Ithaca College, USA
Yale, USA	University of Exeter, UK
Kings College London, UK	University of Glasgow, Scotland
Alberta College of Art and Design, Canada	Harvard University, USA
Heriot-Watt, Dubai Campus, UAE	University of Texas, USA
Higher Colleges of Technology, UAE	Monash University, Australia
University of Bath, UK	University of Khartoum, Sudan
Lancaster University, UK	University of Toronto, Canada
Art Institute of Pittsburgh, USA	University of Szeged, Hungary
American University of Dubai, UAE	University of Guelph, Canada
American University of Sharjah, UAE	Lausanne Hotel School, Switzerland
University of Leeds, UK	York University, Canada
London School of Economics, UK	University of British Columbia, Canada
University of Delaware, USA	University of Oxford, UK
University of California , Los Angeles, USA	University of Pennsylvania, USA
Sam Huston State University, USA	Goldsmiths University of London, UK
University of Sunderland, UK	University of Birmingham, UK
University College London, UK	Abu Dhabi University, UAE
University of Waterloo, Canada	Zayed University, UAE
University of Jordan, Jordan	Savannah College of Art and Design, USA
Cornell University, UK	New York University (NYU) Abu Dhabi, UAE
McGill University, Canada	St Edwards University Texas, USA
Universidad Tecnologica Nacional (UTN), Argentina	Royal College of Surgeons, Bahrain
Concordia University, Canada	Lebanese American University, Lebanon
Murdoch University, Australia	Ohio State University, USA
Griffith University, Australia	IILM Business School, India
Stellenbosch University, SA	Louisiana State University, USA
University of Maryland, USA	Uppsala University, Sweden
Kingston University, UK	University of West England, UK
University of Kent, UK	University of Debrecen, Hungary
University of London, UK	



'Achieving Excellence'

**Contact Information**

Miss Lorraine Harte  
Head of Year 12 and Year 13 (Sixth Form)  
Career Guidance Officer  
AAESS  
[lharte@aaess.sch.ae](mailto:lharte@aaess.sch.ae)

Please note that should you need any further information regarding Al Ain English Speaking School, please contact Miss Lorraine Harte, Career Guidance Officer, via email.